

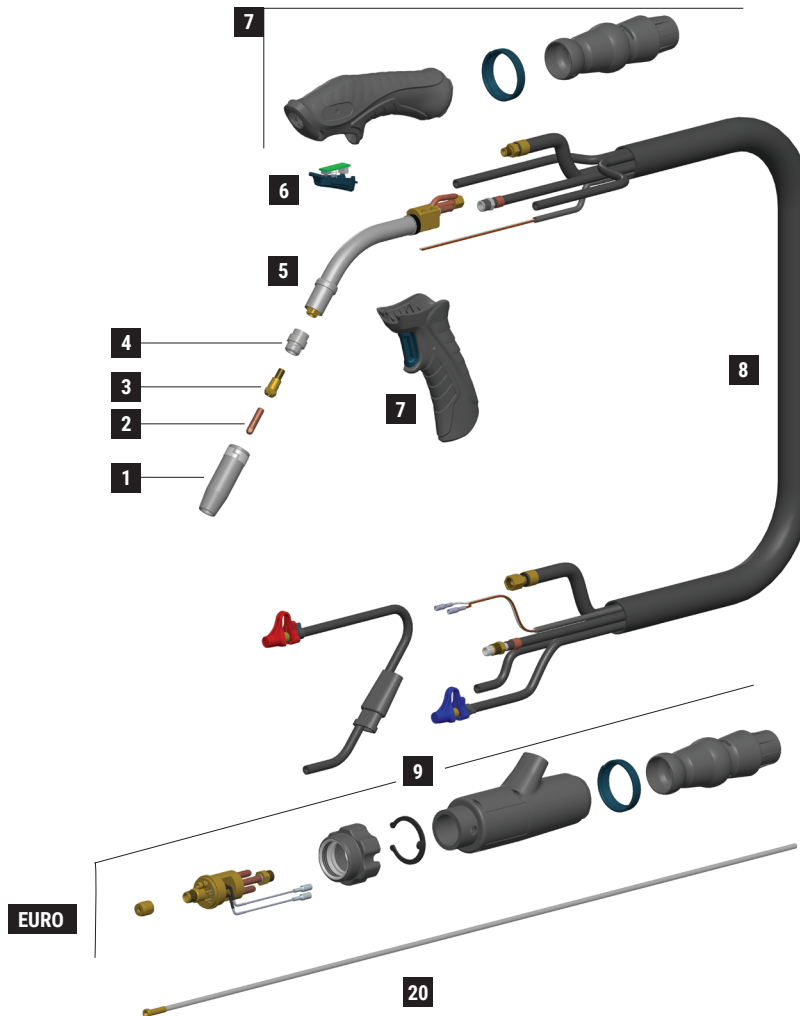
# ERGOPLUS 240

CE EN60974-7



| CODE       | ↔   |       |  |   |
|------------|-----|-------|--|---|
| MB2600-030 | 3 m | 10'   |  | 1 |
| MB2600-040 | 4 m | 12'   |  | 1 |
| MB2600-050 | 5 m | 16.4' |  | 1 |

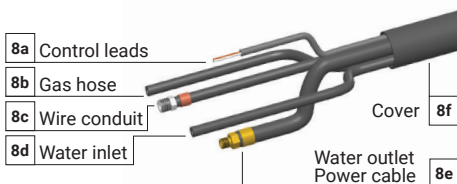
| TECHNICAL DATA      |                     |               |
|---------------------|---------------------|---------------|
| <b>ERGOPLUS 240</b> |                     |               |
|                     | 1,1 kg              | 2.43 lb       |
|                     | 113                 |               |
|                     | 0,8 ÷ 1,2 mm        | .030" ÷ .045" |
|                     | 300A CO2 - 270A Mix |               |
|                     | 2÷4 bar             |               |
|                     | 1,6 l/min           |               |



|    | CODE      |  |                            | Ø            |               | ↔       |          | REF      |    |
|----|-----------|--|----------------------------|--------------|---------------|---------|----------|----------|----|
| 1  | MC0300    |  | nozzle                     | 17 mm        | 21/32"        | 63,5 mm | 2-1/2"   | 145.0062 | 10 |
| 1  | MC0301    |  | nozzle                     | 12,5 mm      | 1/2"          | 63,5 mm | 2-1/2"   | 145.0080 | 10 |
| 1  | MC0302    |  | nozzle                     | 10 mm        | 13/32"        | 63,5 mm | 2-1/2"   | 145.0128 | 10 |
| 1  | MC0303    |  | nozzle                     | 17 mm        | 21/32"        | 68 mm   | 2-11/16" | 145.0174 | 10 |
| 2  | MD0008-06 |  | M6 - Cu                    | 0,6 mm       | .023"         | 25 mm   | 31/32"   | 140.0008 | 20 |
| 2  | MD0008-08 |  | M6 - Cu                    | 0,8 mm       | .030"         | 25 mm   | 31/32"   | 140.0059 | 20 |
| 2  | MD0008-09 |  | M6 - Cu                    | 0,9 mm       | .035"         | 25 mm   | 31/32"   | 140.0177 | 20 |
| 2  | MD0008-10 |  | M6 - Cu                    | 1,0 mm       | .040"         | 25 mm   | 31/32"   | 140.0253 | 20 |
| 2  | MD0008-12 |  | M6 - Cu                    | 1,2 mm       | .045"         | 25 mm   | 31/32"   | 140.0387 | 20 |
| 3  | MD0138-00 |  | M6 - brass                 |              |               | 26 mm   | 1" 1/32  | 142.0003 | 20 |
| 4  | ME0084    |  | plastic                    |              |               | 20 mm   | 25/32"   | 012.0183 | 10 |
| 4  | ME0086    |  | silicon                    |              |               | 20 mm   | 25/32"   | -        | 10 |
| 4  | ME0484    |  | plastic compound high tech |              |               | 20 mm   | 25/32"   | -        | 10 |
| 4  | ME0584    |  | ceramic                    |              |               | 20 mm   | 25/32"   | -        | 10 |
| 20 | GM0526    |  | uncoated steel liner       | 1,0 ÷ 1,2 mm | .040" ÷ .045" | 3 m     | 10'      |          | 1  |
| 20 | GM0527    |  | uncoated steel liner       | 1,0 ÷ 1,2 mm | .040" ÷ .045" | 4 m     | 12'      |          | 1  |
| 20 | GM0528    |  | uncoated steel liner       | 1,0 ÷ 1,2 mm | .040" ÷ .045" | 5 m     | 16.4'    |          | 1  |

|   | CODE       |  |                            |   |
|---|------------|--|----------------------------|---|
| 5 | MG0284     |  | Ergoplus 240 torch head    | 1 |
| 6 | MT0563     |  | trigger kit                | 1 |
| 7 | MT0560     |  | handle kit                 | 1 |
| 7 | MT0566     |  | pistol grip                | 1 |
| 8 | MN2014-030 |  | cable assembly - 3 m / 10' | 1 |
| 8 | MN2014-040 |  | cable assembly - 4 m / 12' | 1 |

|   | CODE       |  |                              |    |
|---|------------|--|------------------------------|----|
| 8 | MN2014-050 |  | cable assembly - 5 m / 16.4' | 1  |
| 8 | AR0052     |  | EURO connector               | 1  |
| 9 | BW0020     |  | metal EURO nut               | 10 |
| 9 | FA0026     |  | liner nut M10x1              | 10 |
| 9 | MT0564     |  | Back box kit                 | 1  |



|    | CODE       | ↔         |
|----|------------|-----------|
| 8a | BX1421-030 | 3 m / 10' |
| 8b | QB0231-030 | 3 m / 10' |
| 8c | QB0230-030 | 3 m / 10' |
| 8d | QB0232-030 | 3 m / 10' |
| 8e | QA0030-030 | 3 m / 10' |
| 8f | MQ0125-030 | 3 m / 10' |

|    | CODE       | ↔         |
|----|------------|-----------|
| 8a | BX1421-040 | 4 m / 12' |
| 8b | QB0231-040 | 4 m / 12' |
| 8c | QB0230-040 | 4 m / 12' |
| 8d | QB0232-040 | 4 m / 12' |
| 8e | QA0030-040 | 4 m / 12' |
| 8f | MQ0125-040 | 4 m / 12' |

|    | CODE       | ↔           |
|----|------------|-------------|
| 8a | BX1421-050 | 5 m / 16.4' |
| 8b | QB0231-050 | 5 m / 16.4' |
| 8c | QB0230-050 | 5 m / 16.4' |
| 8d | QB0232-050 | 5 m / 16.4' |
| 8e | QA0030-050 | 5 m / 16.4' |
| 8f | MQ0125-050 | 5 m / 16.4' |

STANDARD